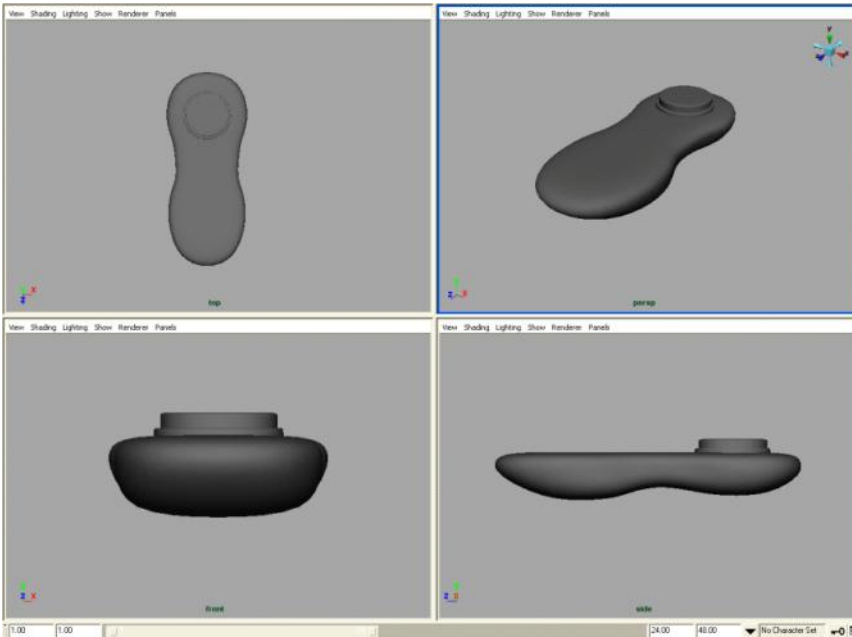


# Wand Models

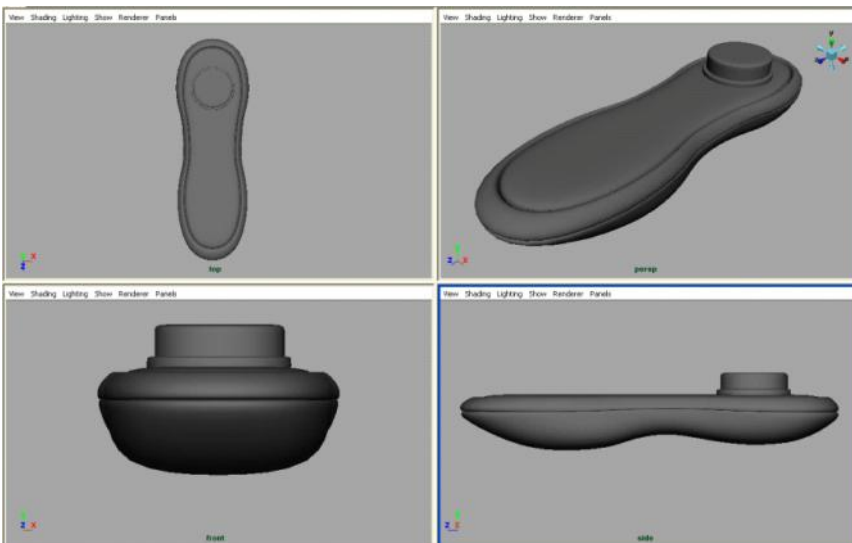
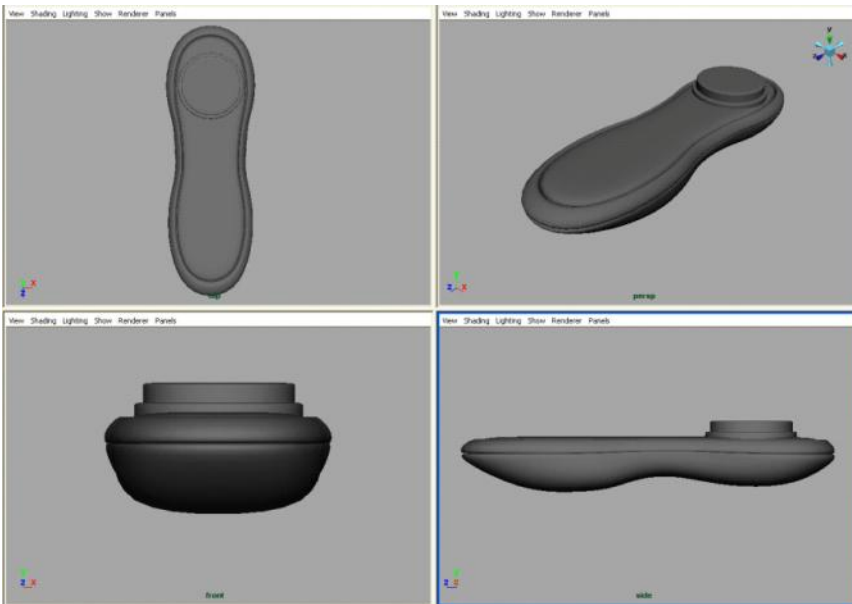
12 February 2009  
09:38



Model by Pritish Dogra  
12/02/2009, 09:39

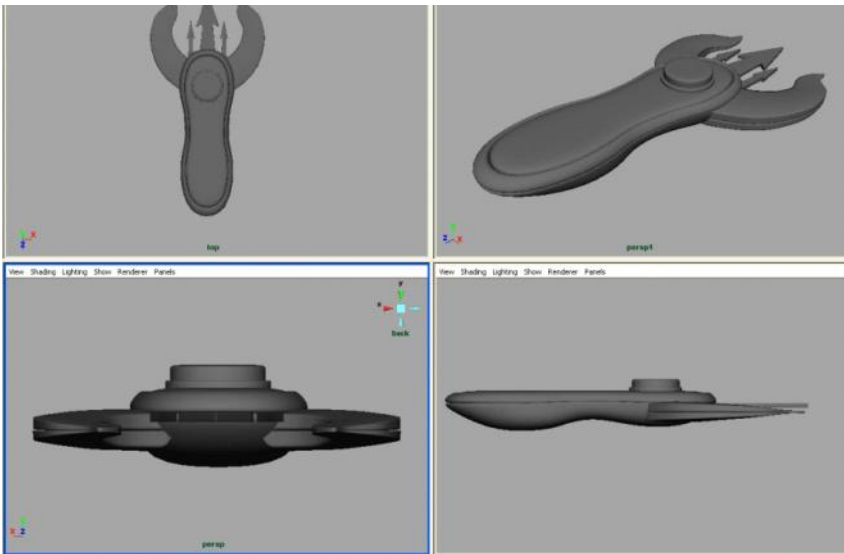
Great start. It's a little too thin (up down) and a little too wide (side to side). Can you break up the top surface with either a curve or a groove or something so that it's not too perfectly flat, and it makes it seem a little more ergonomic? I liked the seam Ryan put into one of his sketches, so perhaps a top to bottom groove would be a nice touch too.

Mike  
12/02/2009, 09:39



Nice work Pritish. I'd just like to refer back to

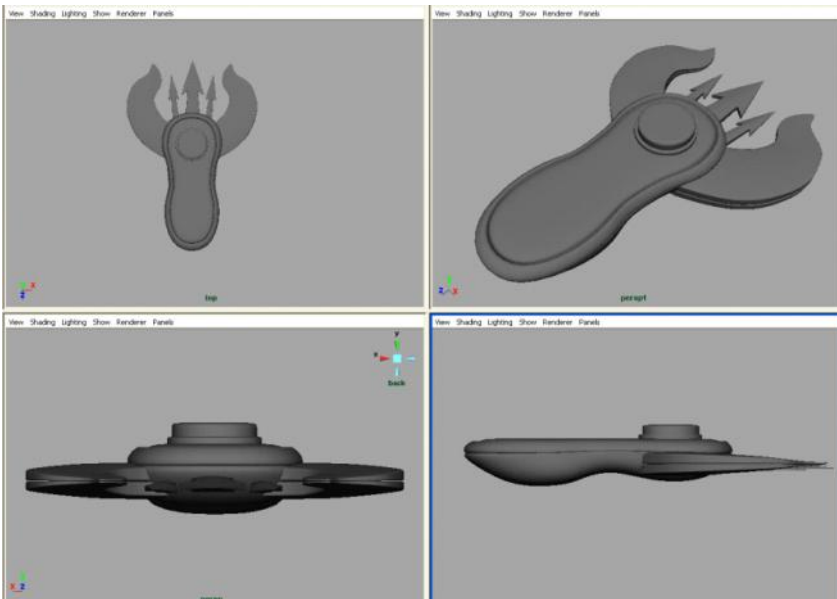




Nick's sketch as the model is a little too cool. It would be nice to think of this as a chunky tazer rather than a long sleek laser. So the base unit could do with being shorter and fatter relative to the horns. Can you make the small forks a little bigger and work the shapes of them into something that's not flat, i.e. Round or better still, angled like arrow heads. Then they just need to be lowered to sit in the middle of the horns in the Front angle (bottom left window).



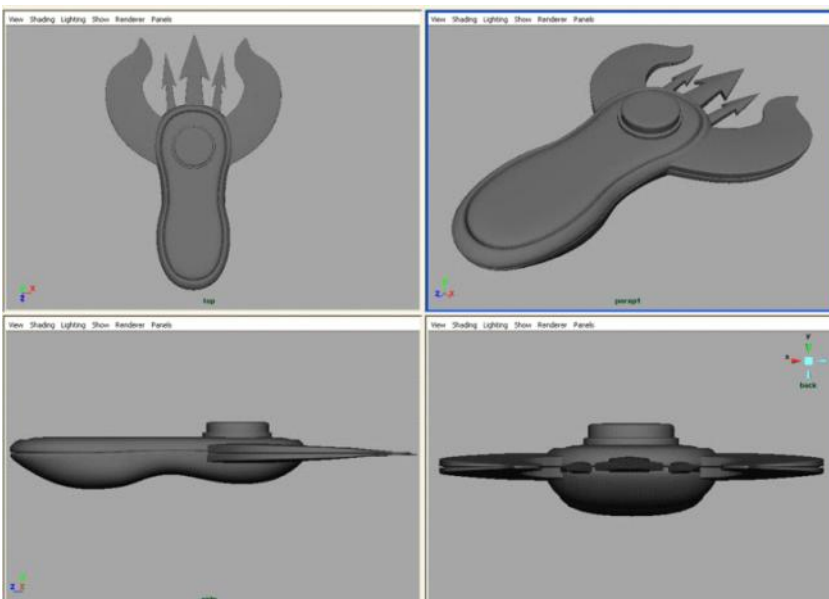
Mike  
18/02/2009, 09:08



Model by Pritish Dogra  
20/02/2009, 14:24

Looks great from all angles, except the two bottom ones. Can you lift the horns and forks to sit in the middle of the fattest part of the base?

Mike



Model by Pritish Dogra  
26/02/2009, 23:19